

June 4, 2020

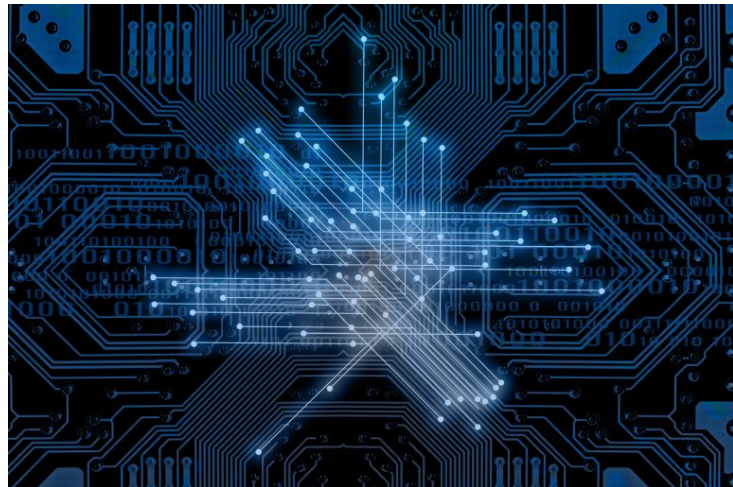


June Newsletter

JASDFW NEWS

CORPORATE MEMBERS

PLATINUM | \$5,000



[Online Event] How Technology Companies in the U.S. and Japan are Responding to the COVID-19 Crisis

TODAY - Thursday, June 4
5:00 pm - 6:00 pm Central

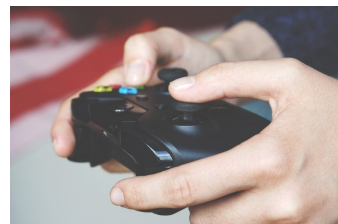
The COVID-19 pandemic has drastically altered lives around the globe. It has forced travel restrictions, daily work to take place online, and communication to occur remotely through video platforms. This has created new opportunities to instantly interact with people thousands of miles away, however cultural and physical distinctions can also create new challenges.

In this webinar, we will discuss how Japanese and American firms are using their expertise to address current societal needs, how working from home and returning to work are different in Japan and the U.S., and how COVID-19 is impacting our immediate future.

[To learn more and register online, click here.](#)

[Online Event] Gaming, Digital Entertainment, & Cool Japan in the Era of COVID-19

Wednesday, June 10
5:00 pm - 6:00 pm Central



As countless people across the globe quarantine due to COVID-19, the gaming industry shows little sign of slowing down in its popularity, with anticipated releases such as Animal Crossing: New Horizons from Nintendo, selling 13.5 million copies worldwide with 50% of these sales being digital downloads. While digital downloads are not a new trend, this is as first for a release from a major gaming company and raises questions about the future of the industry.



Join speakers and experts from the gaming and digital entertainment industry as they discuss gaming's role in connecting people, digital sales trends, and "Cool Japan" as a source of soft power in the era of COVID-19.

[To learn more and register online, click here.](#)



TEXAS
RADIO TAISO
CHALLENGE

[Online Event]
Texas Radio
Taiso Challenge
Saturday, June 13
9:00 am - 10:00 am

Radio exercises are a popular form of exercise in Japan that emerged over a century ago. Japan's calisthenics community wants to build awareness and interest in this popular program that is still practiced daily in Japan with television and radio broadcasts.



TEXAS
CENTRAL

[To learn more about radio exercises and to RSVP, click here.](#)

TOYOTA



50th Annual Meeting & Members' Social Online

Did you miss our Annual Meeting the other week? The entire meeting is available online on our YouTube page for viewing. Click above to watch the entire program, featuring remarks from Consul-General Hideo Fukushima of the Consulate-General of Japan in Houston.

[To watch other JASDFW videos, you can check out our YouTube page by clicking here.](#)

COMMUNITY EVENTS & RESOURCES

CORPORATE MEMBERS

GOLD | \$2,500

BANK OF AMERICA

BRIERLEY

BAKER BOTTS LLP

DFW

DALLAS ECONOMIC DEVELOPMENT

DRC
DALLAS REGIONAL CHAMBER

EY
Building a better working world

FRISCO
ECONOMIC DEVELOPMENT CORPORATION

FUJITSU

JAL JAPAN AIRLINES



Japanese Business Etiquette in the Office

Businesses are slowly re-opening and some of you may have returned to the office. Let's find out some unique business etiquette guidelines you see in a typical Japanese setting, and learn a couple of very important phrases you can use at the end of the day!

[Click here to see more videos from Natsuyo on our JASDFW YouTube channel](#)



Go for Broke Monument: 21st Anniversary

Please support our Japanese American veterans for the Go For Broke National Education Center Monument 21st Anniversary Tribute on Saturday, June 6 at 2:00 pm Dallas/12:00 pm Los Angeles. The program will be offered live on Go For Broke's Facebook page and YouTube channel.

Visit www.goforbroke.org and www.youtube.com/watch?v=DuEwz7vl4eg for more information.

MIZUHO

MUFG

NEC

NTT DATA

pwc

RICHARDSON
ECONOMIC DEVELOPMENT
PARTNERSHIP

SMBC
SUMITOMO MITSUI
BANKING CORPORATION



[Online Event] The Japan-America Society of Washington DC – The U.S. Oil and Gas Market Challenge facing Japanese Business: COVID-19 X Factor

**Tuesday, June 9
8:00 am - 9:30 am Central**

Ten years ago, fracking technology triggered a dramatic change in the world's energy economy. Now, COVID-19's impact on the global economy presents another unprecedented crisis in the oil and gas sector. Join the Japan-America Society of Washington DC for a moderated discussion with American and Japanese experts on energy, business and governance.

[You can learn more and register online by clicking here.](#)



[ONLINE EVENT] Japan Society – Annual Sake Lecture and Tasting: Sake Etiquette

**Thursday, June 11
5:30 - 7:30 pm**

JASDFW is proud to support the Japan Society's annual sake program, which is online this year. Sake expert Timothy Sullivan will walk viewers through the proper sake etiquette and manners for an authentic experience. Viewers will also learn the intricacies of sake customs and a few tricks to impress your friends!

[You can learn more and register by clicking here.](#)

Mitsuwa[®]

MARKETPLACE

Company Spotlight: Mitsuwa Marketplace

<https://mitsuwa.com/tp/>

**10:00 am - 9:00 pm
100 Legacy Drive
Plano, TX 75023
(972) 517-1715**

The biggest Japanese grocery store in DFW. Due to the COVID-19 pandemic, Mitsuwa requires customers to wear face masks. Their temporary hours are everyday between 10 am to 9 pm. There are also dedicated shopping hours on Saturdays from 9 am to 10 am for only customers who are over 60 years old and higher-risk individuals for now.

Events Calendar

NEW MEMBERS

Individual/Family

Rhonda D Thompson
Saiko Ishii
Emma Ishii Sinawat
Dan Sinawat

UPCOMING EVENTS:

- [June 4 | \[ONLINE EVENT\] How Technology Companies in the U.S. and Japan are Responding to the COVID-19 Crisis](#)
- [June 9 | \[ONLINE EVENT\] The Japan-America Society of Washington DC – The U.S. Oil and Gas Market Challenge facing Japanese Business: COVID-19 X Factor](#)
- [June 10 | \[ONLINE EVENT\] Gaming, Digital Entertainment, and Cool Japan in the Era of COVID-19](#)
- [June 11 | \[ONLINE EVENT\] Japan Society - Annual Sake Lecture and Tasting: Sake Etiquette](#)
- [June 13 | \[ONLINE EVENT\] Texas Radio Taiso Challenge](#)
- [July 14 - July 21 | \[ONLINE EVENT\] Japan Society of Northern California - Japan-US Innovation Awards Symposium](#)
- [July 17- July 30 | \[ONLINE EVENT\] Japan Society - JAPAN CUTS: Festival of New Japanese Film](#)

ONGOING:

- [Now - July 7 | \[ONLINE CLASSES\] Table for Two – Wa-Shokuiku: Japanese-inspired Food Education Course for students of all ages](#)

Numerous events throughout the DFW area have been postponed due to COVID19. We will update this section accordingly as the situation develops.

469-573-6880 | info@jasdfw.org | www.jasdfw.org

