

Corporate Members

Platinum | \$5,000



American Airlines 

haynesboone



TEXAS CENTRAL
AMERICA'S BULLET TRAIN



TOYOTA

Gold | \$2,500



Mochitsuki New Year's Celebration



Sunday, January 14 | 2:00 - 5:00 PM

Fujitsu Network Communications, Inc. ([map](#))

Adults: Members \$5 | Public \$10

Children (6-12): \$3

Free for children 5 and under

[Learn More](#) | [Register](#)

Celebrate the Year of the Dog with Japanese music, food, and fun! Try your hand at calligraphy, origami, and traditional Japanese New Year's games. See a traditional mochitsuki (rice pounding) demonstration and sample fresh homemade mochi. Enjoy Japanese drumming, folk dance, and koto music.

Sponsored by



Asia's Nuclear Challenge: North Korea, China, and the Role of Extended Deterrence



Monday, January 8, 2018 (4:00-5:30pm)

SMU's Tower Center Boardroom ([map](#))

Dr. Ken Jimbo is Associate Professor at the Faculty of Policy Management, Keio University and Senior Research Fellow at the Canon Institute for Global Studies and the Tokyo



Foundation. [More](#)

Mark Your Calendar: Japan Update 2018



U.S.- Japan Relations:

One Year into the Trump Administration

Tuesday, February 27 | 12:00 - 3:30 PM

Featuring Dr. Toshihiro Nakayama of Keio University and Dr. Sheila A. Smith, Senior Fellow for Japan Studies at the Council on Foreign Relations. [Learn More](#)

Welcome, New Members!

Bronze

Marketwave
Panasonic Automotive

Regular Individual/Family

Terry Hancock
Neha Kunte

JASDFW Membership

[Join or renew online now!](#)

Individual Membership

Hatamoto - \$1,000
Samurai - \$500
Tomodachi (Friend) - \$100
Regular Individual/Family - \$40
Student/Educator - \$25

Corporate Membership

Platinum - \$5,000
Gold - \$2,500
Silver - \$1,000
Bronze - \$500
Friend - \$100

Contributions are tax-deductible to the full extent allowable by law.

JASDFW Online

www.jasdfw.org



[Join Our Mailing List!](#)

JASDFW Job Bank

Panasonic Automotive
Staff Engineer, Customer Quality

Sendai International Half Marathon: May 13, 2018



Deadline: January 19, 2018

Be an athlete ambassador. Each year, the Japan-America Society sends two superstar runners to compete in the [Sendai International Half Marathon](#). This year's event will be held on May 13. For more information and to apply, [click here](#)

JAL Foundation World Children's Haiku Contest



Deadline: January 15, 2018

The JAL Foundation presents the 15th **World Children's Haiku Contest**. Applicants must submit an original English haiku poem and accompanying artwork. The winning haiku will be published in next year's [Haiku by World Children](#)

anthology. The contest is open to children age 15 and under. Supported by the Japan-America Society of Dallas/Fort Worth. [Learn More](#)

Journey to Japan with Fort Worth Sister Cities International: May 7-16, 2018

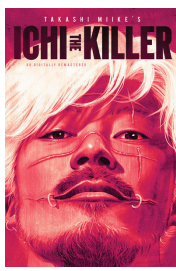


Deadline: January 26, 2018

Embark on the journey of a lifetime as you explore ancient temples in Kyoto, skyscrapers in Tokyo, the haunted history of Hiroshima, and the vibrant culture of Fort Worth's sister city, Nagaoka [More](#)

Upcoming Japanese Films

[Details](#)



Ichi the Killer
January 13
The Texas
Theatre
[More](#)



Gintama
January 20/22
Angelika Film
Center
[Dallas](#) | [Plano](#)

Congratulations, Nengajo Contest Winners!



Happy Year of the Dog!

It's a Japanese tradition to send nengajo (New Year's greeting cards) to friends and family at the start of the year. See more of this year's winners below from participating public schools and universities.

Photo Gallery

Nengajo Contest Winners | [Gallery](#)



Sendai Runners at the Dallas Half Marathon | [Gallery](#)



Upcoming Events and Activities

- Jan. 8, 2018 [Asia's Nuclear Challenge: North Korea, China, and the Role of Extended Deterrence](#)
- July 8 - Jan. 7, 2018 [Styled with Poise: Figures in Japanese Paintings and Prints](#)
- Sep. 16 - Jan. 7, 2018 [Tom Sachs: Tea Ceremony](#)
- Sep. 29 - Dec. 17 [Invisible Cities: Moving Images from Asia](#)
- Oct. 1 - Feb. 25, 2018 [Yayoi Kusama: All the Eternal Love I Have for the Pumpkins](#)
- Jan. 14, 2018 [Mochitsuki New Year's Celebration](#)
- Jan. 15, 2018 [JAL Foundation World Children's Haiku Contest](#) (Submission Deadline)
- Feb. 27, 2018 [Japan Update Symposium](#)
- Weekly [Dallas Japanese Language and Culture Meetup](#) (Meetup.com)
- Weekly [Dallas Japanese and English Language Exchange](#) (Meetup.com)